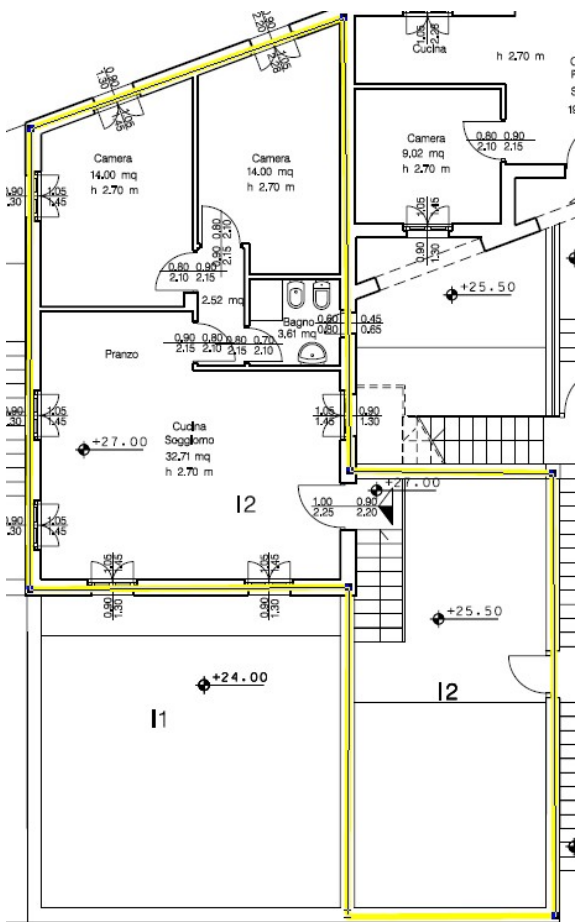


With a surface of sq. mt. 78,46 circa, the apartment is compound of: main access by external private staircase, living room/kitchen, 2 double bedrooms, 1 bathroom. The unit has wide private garden directly linked to the main access. AC and heating systemen included. Under-ground floor, included in the price, 1 cellar of sq. mt. 4,84 and 1 private car spot of sq. mt. 12.50, placed in the communal covered garage.



- Garden: YES
- Court: YES
- Private car space: YES
- Private cellar/storage: YES

- Common services: YES
 - Swimming pool (in terrace)
 - Gym room
 - Laundrette
 - Reception desk

Level	Location
3rd Floor	
2nd Floor	
1st Floor	
Ground Floor	

